



Parliament House, 81 Black Prince Road
London SE1

GARTONJONES.COM



Parliament House, 81 Black Prince Road
London, SE1

GARTON JONES.COM

9 Albert
Embankment
London
SE1 7SP

Lettings:
+44 (0) 20 7735 1888
nineelms@gartonjones.com
www.gartonjones.com

£575 Per Week

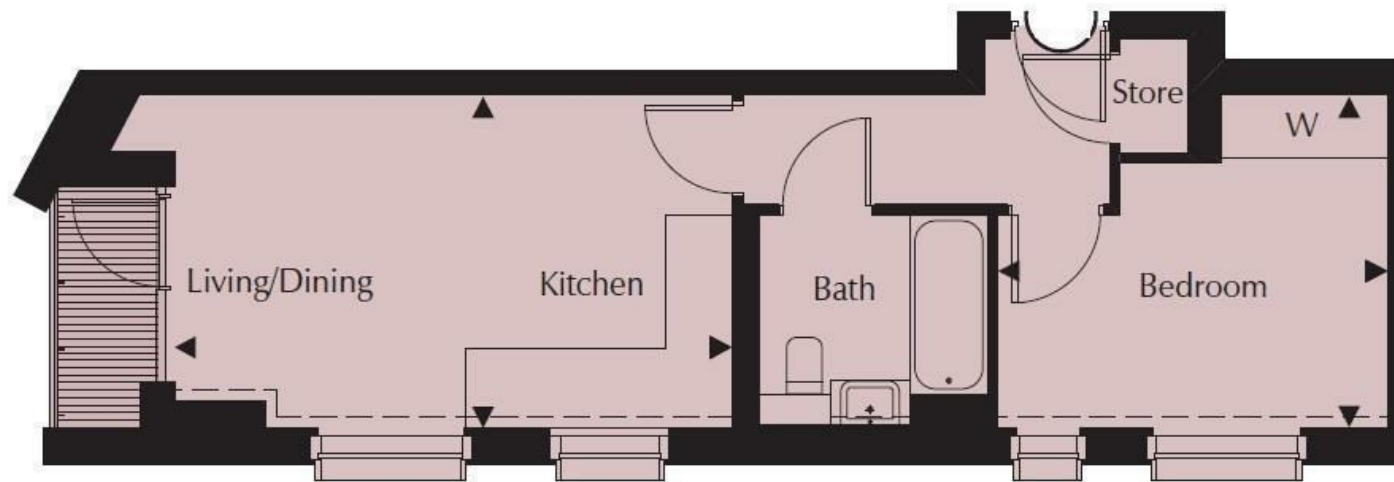
A 1-bedroom apartment of 416sq.ft (38.6sq.m) available in Parliament House, a popular development built by Telford Homes set back from the River Thames. On offer is an apartment which has been furnished to a high standard and comprises an open-plan reception room, modern integrated kitchen, double bedroom, luxury bathroom and good storage. Comprising a balcony with river views towards the Houses of Parliament, Big Ben, Westminster Abbey and beyond. Residents will also enjoy a concierge service, exclusive gymnasium, designer interiors and cycle storage. Parliament House is a 23-storey tower within easy reach of the excellent transport services of Vauxhall including rail, tube, and bus links as well as a river taxi pier at St George Wharf. London's trendy South Bank is also close by.

- 1 Bedroom
- 416sq.ft (38.6sq.m)
- Open Plan Reception
- Good Storage
- Southwest Facing
- Views of Houses of Parliament
- Balcony
- Concierge
- Residents Gym
- 0.6 Miles from Vauxhall Station



Disclaimer: Please note that this building is scheduled to undergo cladding remedial works in the near future. While every effort will be made to minimise inconvenience, potential disruption may occur during these works. Further details can be provided upon request. Please note furniture may differ to that shown in the current photos.

Lambeth Council Tax Band E - £2,153.43 per annum
12 Month Minimum Term
5 Week Security Deposit



Kitchen/Living/ Dining		
	5.70m x 3.19m	18'8" x 10'5"
Bedroom	3.73m x 3.19m	12'2" x 10'5"
Total Area	38.6 sq m	416 sq ft

